

RETROFIT KIT



## LBI ACCESSORIES

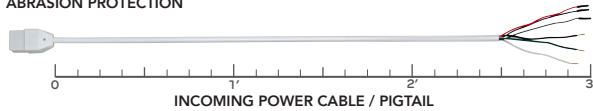
Use the following accessories with the LBI (Linear Transformer) for almost unlimited possibilities.



SERVICE DISCONNECT & ABRASION PROTECTION

### INCOMING POWER KIT - REQUIRED TO POWER LBI | RP-LBI-G1-IP-3F-DIM

Used to hard wire the incoming power cable into fixture or junction box. **Included with kit:** Incoming Power Cable / Pigtail & Service Disconnect & Abrasion Protection Grommet



### INCOMING POWER CABLE W/ SWITCH

RP-LBI-G1-IP-2F-120V-SW  
RP-LBI-G1-IP-7F-120V-SW

Used to hard wire the incoming power cable into fixture or junction box. Switch included.



### LINKING CABLES

RP-LBI-LC-6IN-DIM-10P	RP-LBI-LC-36IN-DIM-10P
RP-LBI-LC-6IN-NODIM-10P	RP-LBI-LC-36IN-NODIM-10P
RP-LBI-LC-12IN-DIM-10P	RP-LBI-LC-48IN-DIM-10P
RP-LBI-LC-12IN-NODIM-10P	RP-LBI-LC-48IN-NODIM-10P
RP-LBI-LC-18IN-DIM-10P	RP-LBI-LC-60IN-DIM-10P
RP-LBI-LC-18IN-NODIM-10P	RP-LBI-LC-60IN-NODIM-10P
RP-LBI-LC-24IN-DIM-10P	RP-LBI-LC-72IN-DIM-10P
RP-LBI-LC-24IN-NODIM-10P	RP-LBI-LC-72IN-NODIM-10P

DIM



### SEAMLESS CONNECTOR

RP-LBI-SSC-DIM-10P  
RP-LBI-SSC-NODIM-10P

NO-DIM



### LINKING CABLES & SEAMLESS CONNECTORS

Use Linking Cables and Seamless Connectors to easily connect the power and control wires from one light bar to another. The ...-DIM version of the linking cables and seamless connector link all connections (AC power; 12V Aux power; 0-10V DIM signal) from light bar to light bar. Use these items to control all light bars from one sensor or incoming cable connection. The ...-NODIM version of these items only links the AC power. Use these items to AC power all light bars with a single power feed; but separate control signals into individual groups.

### SENSOR KITS

RP-LBI-OC2-A (STANDARD RANGE - SINGLE PACK)  
RP-LBI-OC3-A\_LR (LIMITED RANGE - SINGLE PACK)



Sensors kits for LBI are Tri-Level, remote controllable high frequency radar sensor designed to easily integrate with the LBI bars. It is totally plug&play! It can dim the light bars down to conserve more energy from both motion and daylight. The sensor controls the 0-10V DIM signal in both directions from the Sensor unit. Each sensor kit comes with (1) sensor (4.7 inch); (1) surface mount magnetic clip; (2) Seamless Connector-DIM; (1) 12" Linking Cable-DIM. See **RP-LBI-OC2-A/OC3-A** data sheet for more details.



### SUSPENDED IN-LINE KIT | RP-LBI-SIL-KIT-10P (10 PACK ONLY)

The Suspended In-Line Kit includes everything needed to suspend LBI from the ceiling.

**The complete kit includes:** Suspended In-Line Bracket, Aircraft Cable (9.8ft), Adjustable cable gripper, and a ceiling anchor.



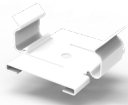
### SUSPENDED IN-LINE BRACKET (\*BRACKET ONLY\*) | RP-LBI-SIL-BRACKET-10P (10 PACK ONLY)

The Suspended In-Line Bracket (bracket only) is a wide clip that fastens over the junction between 2 LBI light bars to keep them straight in-line and provides mounting points for common suspension methods (air craft cable, drop chain, etc.) This part number is for the bracket only.



# LBI ACCESSORIES

Use the following accessories with the LBI (Linear Transformer) for almost unlimited possibilities.



## T-BAR CLIPS | RP-LBI-T1516-10P (PARALLEL – DIRECTLY UNDER THE T-BAR – 10 PACK) RP-LBI-T1516-90-10P (PERPENDICULAR – ACROSS THE BAR – 10 PACK)

The T-Bar Clips is the fastest way to mount a light bar to a T-Bar grid ceiling. Works with standard 15/16" grid only.



## 4.7IN SPACER CONNECTOR | RP-LBI-SRC-4.7IN (SINGLE PACK)

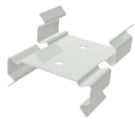
Use the 4.7in Spacer Connector to bring the length of the bar system to a standard dimension (24in, 36in, 48in). This is useful when retrofitting linear fixtures of a standard length. It allows for the bar to be centered on each standard-length fixture. Each 4.7in spacer connector comes with (2) Seamless Connector-DIM.

**\*Note: spacer does not emit light**



## BLADE CLIP | RP-LBI-BLC-10P (10 PACK ONLY)

The Blade Clip is designed to provide a retrofit solution for fixtures that have thin sheet metal or plastic film reflectors commonly found on high bay fixtures. The rotating mounting blade provides a degree of freedom to align the mounting holes on the blade with fastening locations that may not be in-line with the light bar or where the distance between available mounting points is greater than the length of the light bar. It is common to attach the blade to the same point holding the thin reflector to the fixture frame.



## UP/DOWN CLIP | RP-LBI-UDC-10P (10 PACK ONLY)

Use the Up/Down clip with our suspended in-line kit to clip a shorter bar to provide up-light. For example if suspending a 4ft, use the 3ft OR 2ft as the up-light, (so there is room for the suspension-kit connection). The RP-LBI-SIL-KIT comes with wire clips to hold linking power cable for UP bars in-line and neat. (linking cable not included)



## LBI JUNCTION BOX | RP-LBI-JBOX-1.5X4

The LBI junction box is used to connect LBI wiring to branch circuits. Connections are made from the LBI Junction box to the Light Bar using seamless connector or linking cable. The internal wiring (except optional switch) are rated to 600V (for 347V operation) For undercabinet or task lighting, the junction box includes an optional 120V ON/OFF switch that can be installed into a rectangular knock-out on the cover. Kit includes 1pc RP-LBI-SSC-DIM.



## 12FT 90-DEGREE INCOMING POWER CABLE | RP-LBI-G1-IP-90DEG-12F-DIM

Use the 90 degree Incoming Power Cable for an easy and clean connection to suspended LBI fixtures.



## OUTPUT CAP | RP-LBI-G2-OUTPUT-CAP-10P

Male power and control termination plug for the LBI linking connector 10 pack.



## SURFACE MOUNT MAGNETIC CLIP | RP-LBI-SMM-10P (10 PACK ONLY)

The Surface Mount Magnetic Clip provides the most universal method for attaching the light bar to a wall, ceiling, or fixture to be retrofitted. The mounting tabs that extend perpendicularly from the light bar can be easily removed by bending and breaking on the pre-scored line. The strong rare-earth magnets are intended to hold light bars in place while installing mechanical fasteners. Not intended for permanent installation with magnets only.

*Two of these clips are included in each light bar kit.*



# LBI ACCESSORIES - EMG KITS

RP-LBI-EMG1-25W (SINGLE FLEX)  
 RP-LBI-EMG2-25W (DUAL FLEX)

## PRODUCT DESCRIPTION

The EMG-H Series LED emergency drivers are UL Listed for factory or field installation, unrivaled emergency solutions for LED product with Internal driver. It allows the same LED luminaire to be used for normal and emergency operation and works in conjunction with an AC LED driver that convert new or existing LED fixtures into emergency lighting. It includes a long-life recyclable Lithium battery, and is backed by a 5-Year Warranty.

## OPERATION

When AC power fails, The EM-H Series emergency LED driver immediately switches to the emergency mode, operating the LEDs at full lumen output for a minimum of 90 minutes (25W max load). When AC power is restored, the emergency driver automatically returns to the charging mode.

## FEATURES

1. Long life recyclable Lithium battery.
2. Integration of test switch and charge indicator.
3. Used for exterior or interior of luminaire.
4. The power of LED luminaire < power of emergency driver.

## MOUNTING CONFIGURATION:

**RP-LBI-EMG1-25W**                      **Single Flex (Standard Version)**

Mounts to the junction box and provides flexible conduit for remote mounting of the test accessories.

**RP-LBI-EMG2-25W**                      **Dual Flex (Optional)**

Provides dual flex for wiring to both fixture or driver compartment and test accessories

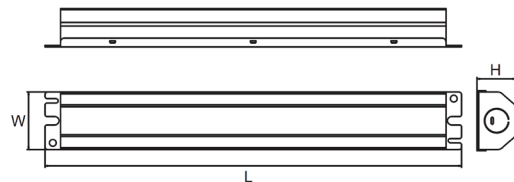
## EM-H Series

### UL Listed LED Emergency Driver

*Unrivaled emergency solutions for LED Products with Internal drivers*



## DIMENSIONS



MODEL	L	W	H
-------	---	---	---

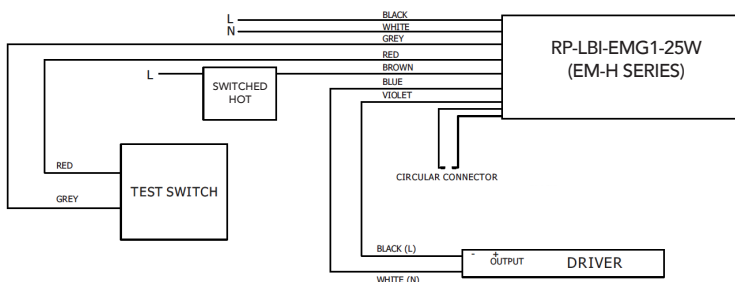
**Output Power**  
25 Watts (Max Load)  
**Output Voltage**  
170V DC  
**Input Current**  
60 mA (Max)  
**Input Power**  
8 Watts (Max)  
**Input Volatage**  
120-277VAC, 50-60Hz  
**Emergency Operation**  
>90 Minutes  
**Operating Temp**  
0° to 50°C  
**Battery**  
Lithium  
**Recharge**  
36 Hrs  
**Dimensions**  
L 17.14' X W 2.13" X H 1.57"

**RP-LBI-EMG1-25W**  
(EM-H25170-XX)



## TYPICAL WIRING DIAGRAM

(Must connect DIM circuit from EM unit to LBI)





# LBI ACCESSORIES - EMG KITS

RP-LBI-EMG2-8W-DIM (LINKABLE UP TO 100W OF LBI)

RP-LBI-EMG2-25W-DIM (LINKABLE UP TO 300W OF LBI)

## PRODUCT DESCRIPTION

The EMG-H Series LED emergency drivers are UL Listed for factory or field Installation, unrivaled emergency solutions for LED product with Internal driver. It allows the same LED luminaire to be used for normal and emergency operation and works in conjunction with an AC LED driver that convert new or existing LED fixtures into emergency lighting. It includes a long-life recyclable Lithium battery, and is backed by a 5-Year Warranty.

## INSTALLATION

The Emergency Back up will dim the connected fixtures down to a level where they will run without line voltage for 90Min. For fixtures that are connected to a wall dimmer the Emergency Back up will override the current dim setting and provide the maximum illumination possible at the selected wattage for 90Min.

How many fixtures can be connected? This is determined by the "maximum luminaire power load" listed for each respective back up wattage that we offer. The Luminaire power load is referencing the amount of power the fixture or fixtures consume. This is selected by the FLEX WATT setting of each fixture. When using multiple fixtures, the wattages are added together to get the total power load. For example, if the 4FT PRO LBI is being used, it has a maximum wattage setting of 25W, that means a maximum of 4 fixtures can be attached to the 8W emergency backup and a maximum of 12 fixtures can be used with the 25W back up version. For another example, if a single 4FT PRO LBI set at the highest wattage setting is attached to the 25W back up it will output full brightness for 90Min.

## OPERATION

When AC power fails, The EM-H Series emergency LED driver immediately switches to the emergency mode for a minimum of 90 minutes. When AC power is restored, the emergency driver automatically returns to the charging mode.

## FEATURES

1. Long life recyclable Lithium battery.
2. Integration of test switch and charge indicator.
3. Used for exterior or interior of luminaire.
4. 8W version, load up to 100W w/dim control 25W version, load up to 300W w/dim control

## MOUNTING CONFIGURATION: DUAL FLEX

RP-LBI-EMG2-8W-DIM

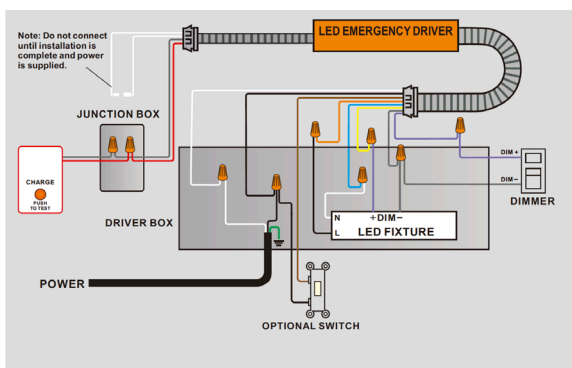
RP-LBI-EMG2-25W-DIM

Mounts to the junction box and provides flexible conduit for remote mounting of the test accessories.



## TYPICAL WIRING DIAGRAM

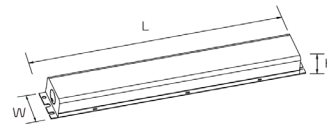
(Must connect DIM circuit from EM unit to LBI)



## EM-H Series

### UL Listed LED Emergency Driver

Unrivaled emergency solutions for LED Products with Internal drivers



MODEL	L	W	H
RP-LBI-EMG2-8W-DIM	12.76"	2.13"	1.57"
RP-LBI-EMG2-25W-DIM	15.40"	2.13"	1.57"

### RP-LBI-EMG2-8W-DIM

(EM-H08170-LBF)

#### Output Power

8 Watts

#### Output Voltage

170V DC

#### Input Current

70 mA (Max)

#### Input Power

3.2 Watts (Max)

#### Input Volatage

100-277VAC, 50-60Hz

#### Emergency Operation

>90 Minutes

#### Operating Temp

0° to 50°C

#### Battery

Lithium

#### Recharge

24 Hrs

#### Luminaire Load Power

100W (Max)

#### Certificates

UL , CEC

### RP-LBI-EMG2-25W-DIM

(EM-H25170-LBF)

#### Output Power

25 Watts

#### Output Voltage

170V DC

#### Input Current

110 mA (Max)

#### Input Power

6 Watts (Max)

#### Input Volatage

120-277VAC, 50-60Hz

#### Emergency Operation

>90 Minutes

#### Operating Temp

0° to 50°C

#### Battery

Lithium

#### Recharge

36 Hrs

#### Luminaire Load Power

300W (Max)

#### Certificates

UL , CEC